



OSHER@Dartmouth

Discovering the new. The provocative. The timeless.



Photo by Susan Apel

Fall 2016 Newsletter

Study Leader Profile: Maynard Goldman

When a course is titled “The Greatest Show on Earth” you know that it’s either about the circus or the presidential election – two things which this year appear to be indistinguishable. The course leader, Maynard Goldman has spent a large part of his life involved in Massachusetts politics and knows a good show when he sees one. “I don’t have many answers”, he likes to say, “but I sure know the right questions.”



Maynard grew up as a political orphan – a Republican in eastern

Massachusetts – though his first foray into the political world began in Michigan, where he graduated from the University of Michigan, and worked on special projects research for his local congressman, House Minority Leader Gerald Ford. Apparently he wasn’t what one would call a doctrinaire Republican because at about the same time he became Executive Assistant to the Michigan Democratic State Chairman.

Harvard Law School brought him back to Massachusetts and local politics as well as a business career in

international management consulting. As a Republican in eastern Massachusetts he didn’t win many political contests, but he did gain the friendship and respect of those across the aisle. When Gov. Michael Dukakis needed to appoint a Democrat and a Republican to the Outside Advertising Board (OAB), which regulates billboard advertising, Maynard was the Republican he knew and trusted and he ended up chairing the board for six years.

He was a founding member of the Island Alliance dedicated to protecting the islands in and around Boston Harbor. Working with Ted Kennedy, Tip O’Neill, and Gary Studds, they succeeded in creating the Boston

Continued on Page 4



President’s Corner

OSHER@Dartmouth needs a new home. We are working on it, and here are things you should know:

OUR CURRENT SITUATION

1. We rent the DOC House, but our lease is for only 26 weeks a year during fall, winter, and spring Dartmouth terms (which correlate with our terms) from 8 am to 8 pm M-Th and 8 am to noon on Friday. There are three small classrooms, none of which have adequate space for a wheelchair or walker. Those three classrooms together hold approximately 50 people. In the fall of 2015 we needed seats for 1,116 people a week during our fall term. Additionally, there is not enough parking! Because the upstairs office space was overcrowded for our staff and was not accessible to some of our members, we relocated our staff to 7 Lebanon St. in Hanover. Having staff separated from classes is far from ideal! Our lease at the DOC House ends in 2019, and our lease at 7 Lebanon St. in

Continued on Page 3

In This Issue:

Study Leader Profile	1
President’s Corner	1
Notes from Finance Committee	2
Where Will You Be?	4
What Do They Do?	5
Osher Art Gallery	6
Lisa’s Corner	6

**Fall Term Classes
September 7 -
November 18**

Notes From the Finance Committee

As we look ahead to the expiration of our leases on DOC House and 7 Lebanon Street in 2018-19, asking what space we need and how much we currently spend is a good starting point. Staff costs are clearly our biggest single item of expense. Space comes second. We spend approximately \$90,000 per annum on space. Our lease on DOC House provides us with three classrooms during each of the fall, winter and spring terms, plus the small office/meeting space upstairs year-round at below market rate. When we outgrew the office space in DOC House we moved our staff to leased space at 7 Lebanon Street for which we pay market rate.



We now offer up to 200 courses per year and the number of participants has grown to over 2,900 (up 16% over the last five years). This growth has required more classrooms as we run up to seven classes in parallel at peak time. We are fortunate to have a number of partners - Kendal at Hanover, Wheelock Terrace, and Kilton Library to name a few - who provide space for classes at no charge. In

addition, some of our course leaders provide their own art studio space. But this is far from enough and we have to pay for additional classrooms at locations around the Upper Valley.

Your Finance Committee has embarked on the preparation of a business plan that will provide a long-range projection of our organization's revenue and expense. This plan will be updated periodically to reflect our current pattern of use, and what we expect in the future. It's quite a puzzle with many factors, but the space needs are perhaps the most pressing in the near-term.

- Iain Sim,
Treasurer and Chairman,
Finance Committee

New Features - In This Issue and Coming Soon!

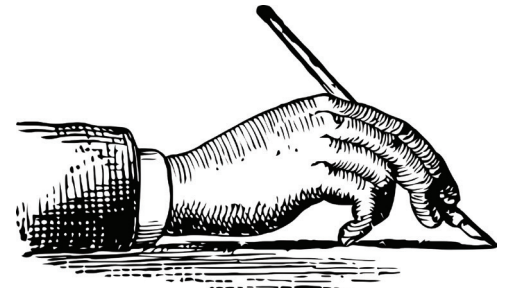
Every few months, we on the newsletter crew do our best to share news and items of interest with our members. You're familiar with our *President's Corner* feature, in which the current President of Osher at Dartmouth shares news of ongoing and future plans for our program in general; *Notes From the Finance Committee* provides an overview of where our organization stands fiscally; *Study Leader Profile* highlights one of our outstanding volunteer Study Leaders every issue; and *Lisa's Corner* gives a quick glance at what the office is up to and items the staff think you'll be excited about. We want to share even more information every term, and we have some new features we think you'll enjoy.

This issue, we've added *What Do They Do?*, which will highlight a local group or organization in the Upper Valley that does something we

think is of interest to our members. Our Fall installment takes a look at Vital Communities, an organization that has had an amazing impact on our region since the 1990's.

We are hoping to include another new feature in our upcoming Winter issue: *Letters to the Editor*. We want to feature letters, suggestions, and notes from you, our members. Do you have stories you'd like to share about interesting classes? Constructive critiques of the way our organization operates? Questions about a certain aspect of classes or membership? Send your letters or emails to one of the addresses below and we will do our best to feature your question and our answer with each newsletter.

We hope you enjoy these exciting new features!



You can mail your Letters to the Editor to this address:

Osher at Dartmouth
7 Lebanon Street, Suite 107
Hanover, NH 03755

You can e-mail your Letters to the Editor to this address:

osher@dartmouth.edu
(Please include "Letters to the Editor" in the subject line of your message.)

President's Corner (cont.)

2018. Should we find a new space, we will ask the College to release us from our current rental agreements.

2. We cannot book Dartmouth classrooms until two weeks into the Dartmouth term. Our classes run at the same time as Dartmouth undergraduate classes. We are currently planning space for our winter courses, and we cannot wait to assign classrooms. And there is not adequate parking on the campus for our members.

3. We rent additional classroom space in the community for classes not held at the DOC House. Two of the locations we have relied upon have become unavailable. Kendal is undergoing renovations and we cannot use space there for six months or more. The Wilder Center is not open for rentals. Rental costs have escalated in the past year. This summer the staff was investigating many locations to accommodate the 80 classes we are offering this fall.

4. Our program is in need of a location that will accommodate our staff and our classes. Ideally, we need

five small classrooms, each holding up to 20 people; three large classrooms, each holding up to 30 people; a large meeting room which can accommodate 100 people and be divided in half when needed; and a lecture hall.

WHAT WE ARE DOING ABOUT IT

1. We are working with Dartmouth to find a home which will provide adequate classroom space, parking, rooms for socializing, storage areas for supplies and art projects, a computer lab, and offices for the staff. The space we are seeking will meet our current and future needs if we continue to grow, because we will have control of the space and be able to offer classes at various times not available to us now.

2. Dartmouth College is constantly struggling with space needs on campus and has made it absolutely clear that there is not now, nor will there be, space on the campus for us in the future. Knowing that, Dartmouth is working with us to find an

appropriate space close to the campus because our relationship with the College is vital to us. Please note we chose the name OSHER@Dartmouth to reflect the importance of our relationship.

3. Finding a space will require us to initiate a capital campaign to raise the money for the building and for furnishings. We need permission from the College to do that, and it is our hope that when we find a potential space, the College will grant us that permission.

4. Your Leadership Council wants to keep you informed of everything we are doing and get your input. As we go down this path, we will have updates for you and ask for your participation.

5. When we are successful, we will have a fabulous space with current technology for classes and lectures, our staff on site, and opportunities to meet and socialize with our member friends. We are looking forward to an exciting future!

- Sylvia Sands Paxton, President

OSHER@Dartmouth Namibia Safari Trip

From May 11 through 23, 2016, a small group of Osher at Dartmouth members embarked on an extraordinary journey through Namibia, a country in south-western Africa. The safari was sponsored by the Osher at Dartmouth Study/Travel Program. The trip was preceded by a class Dan Hopkins taught covering all aspects of Namibia. Dan wrote an exceptional article about this amazing journey. To read it, please visit our website at <http://osher.dartmouth.edu/news>.

Did You Know...?

Superb fairy-wrens are taught a password while in the egg by their mother. If they don't sing it after they hatch, they don't get fed.

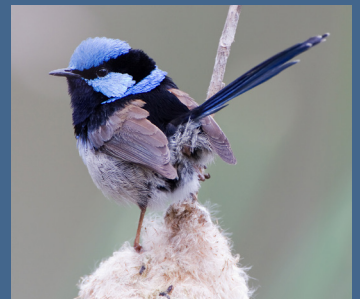


Photo by JJ Harrison (jjharrison89@facebook.com) as featured on Wikipedia.org.

Study Leader Profile (cont.)

Harbor National Recreation Area. Service on numerous public service boards followed. Most had environmental missions, but there were also medical, cultural, and arts organiza-

tions in the mix. He was a founding member of the Massachusetts Environmental Trust, where he served as chairman for 19 years under five governors.

When Maynard and his wife Suzanne moved to New Hampshire nothing changed. He was appointed by the governor to the Legislative Commission studying the Leasing of Public Land on State Waters and the NH Public Water Access Advisory Board. He's calculated that collectively he has roughly 160 years of service on non-profit boards. Fortunately, these are not consecutive.

Maynard plans to follow up on last Spring's highly successful "Greatest Show – The Primaries," with a new offering this Fall, "The Road to The White House - The 2016 Presidential Election." If you like lively political discussion, this course is one to consider. When his Fall course was evaluated by the participants, several suggested that "he was clearly a Democrat." The same number were equally sure that he was a Republican. Clearly, he got it right.

- Steve Tofel



Eleanor Roosevelt and Maynard Goldman

Where Will You Be On August 21, 2017?

Next August, for the first time in more than 99 years, a solar eclipse will be visible throughout the entire "lower 48." No matter where you are (assuming clear skies), you will be able to watch – with proper eye protection of course – as the sun becomes more than half-covered by the moon. However, for the extraordinary experience of a totally eclipsed sun, you will need to be within a sixty-mile-wide path that extends from Oregon to South Carolina.

Members of Osher at Dartmouth and Adventures in Learning at Colby Sawyer College will have the opportunity to experience totality as part of a study/travel program that will culminate in a 10-day tour of the Pacific Northwest. Travel highlights include Seattle, Mount St. Helens, Portland, the Columbia River Gorge, Mount Hood, Crater Lake, Redwood National Forest, and San Francisco. We will view the eclipse in central Oregon, just east of the Cascade Range, a location having the highest probability for clear skies of any

along the entire 2600-mile path of totality.

A six-to eight-week course on the Pacific Northwest will be offered in the spring or summer, 2017 terms by both Osher and AIL. Topics will include past and present geology of the region, pre-historic settlement, discovery/exploration by Europeans and Americans, and the evolution of this untamed wilderness into the scenic wonderland of today. Introduction to the venues to be visited and background on the total solar eclipse experience will also be covered.

Ten participants are currently booked with TravelQuest International. Although this tour is more than half-filled, TravelQuest has of-



fered to hold, for a limited time, a few spots for Osher and AIL participants. Additionally, they are offering a rebate for a group of 20 or more and they will provide a private motor coach if the group reaches 30 or more.

If you are interested in this program, I encourage you to act quickly. For further information, please contact me at rfk33@comcast.net.

- Bob Koester

What Do They Do?



Working Together for

VITAL COMMUNITIES

VitalCommunities.org

**A Leader in Communications
and Community Development
in the Upper Valley**

If you've been in the Upper Valley for even just a little while, chances are you've heard of Vital Communities. The White River Junction-based non-profit brings people together to make a positive difference on a range of regional issues that matter in the Upper Valley. Their core work includes:

- Guiding people to some of the region's cultural, historical, and natural treasures through Valley Quest
- Educating and engaging citizens to better serve their communities through the 10-month Leadership Upper Valley program
- Helping people find better ways to move around the Upper Valley

through a Smart Commute initiative, Everyday Bicycling workshops, and other transportation projects

- Cultivating the relationships that keep agriculture a vital part of Upper Valley life by connecting aspiring and successful farmers, helping consumers find and use local foods, and introducing students to local farms and food through the Upper Valley Farm to School Network
- Promoting local businesses through the Local First Alliance
- Advising and connecting nearly 40 town energy committees, and developing innovative ways for homeowners and businesses to choose energy efficiency and renewable energy
- Convening local business and municipal leaders on a regular basis to explore common issues
- Supporting more than 20 active Community Email Discussion Lists ("listservs") in the Upper Valley



It is probably this last core program that you, Osher members, might be most familiar with. Vital Communities oversees the operations of listservs in towns throughout the Upper Valley. In a short period of time this critical neighbor-to-neighbor communications medium has developed into a "must-have" application for digitally savvy citizens in our region.

Learn more about everything Vital Communities does! Go online at VitalCommunities.org.

SPECIAL LECTURE

Presented by Osher at Dartmouth

Religious Freedom or Religious Tyranny

Speaker: Judy Brown

The latest clash in the constitutional culture wars is the invocation of "religious freedom" to justify refusing to comply with constitutional and statutory mandates. Judy Brown will explore this clash and the difficulties of achieving resolution in this special lecture.

Judy Brown is a Professor Emerita at Northeastern Law School and has led Osher classes on a variety of subjects for the past nine years.



Moore Hall
Filene Auditorium
Hanover, NH

Saturday, October 8
9:30 am - 12:00 pm

\$10 admission

Pre-registration is highly recommended

To register for this lecture, or for more information on the speaker, visit the Events & Lectures page of our website at osher.dartmouth.edu.

Did You Know...?

Over the last three years, gifts to the Friends of Osher at Dartmouth Fund (previously Friends of ILEAD Fund) have allowed us to purchase equipment and complete projects at the D.O.C. House worth more than \$24,000.





7 Lebanon Street, Suite 107
Hanover, NH 03755
603.646.0154
Email: osher@dartmouth.edu
Web: osher.dartmouth.edu

**NON PROFIT ORG.
US POSTAGE
PAID
DARTMOUTH
COLLEGE**

Osher Office Art Gallery

Stop by our 7 Lebanon Street offices to enjoy a new exhibit every two months. Here's what's coming up:

August/September

Barbara Newton - Landscape Collages of New England

Japanese-type papers torn, layered, and shredded to produce variations of color, line, and texture.

October/November/December

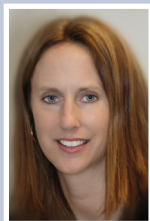
Photographic Journeys

Featuring work by Anne Baird, Janice Fischel, Nora Gould, John Lehet, Li Shen, and Tom Urgo.

The gallery is free to view during regular office hours:

Mon-Thurs 8:30a to 4:30p
Fri 8:30a to 1:00p

Lisa's Corner



I hope everyone is enjoying their summer! We had a wonderful start to fall registration; over 600 members registered for courses on the first day of registration! If you're still hoping to sign up for class, don't worry - registration is open until August 19th.

I'm excited to announce that this fall term I'll be visiting the DOC House regularly to host a new series of "coffee corners", in which I'll be available to chat with members who may have concerns or questions, or just to say hello. Be on the look-out in our Friday weekly emails for dates and times!

We are also introducing a suggestion box at the DOC House and main office which members can use to share their thoughts and ideas with the staff. We hope this will be a great way for members to provide feedback in the form of positive comments, constructive criticism, and new ideas. Please provide your email and name and address so that we may respond to your suggestions and/or comments.

This year we're adding another benefit to your OSHER@Dartmouth membership! We will be offering a series of movies at the Nugget Theater, which will be free to Osher members. The series will highlight a different movie every month, with a single showing on one weekday of the month. This year we're kicking off the series with the theme "Golden Oldies." Be on the lookout for more details, including titles and schedules.

Enjoy the rest of your summer, and we will see you in the fall!